

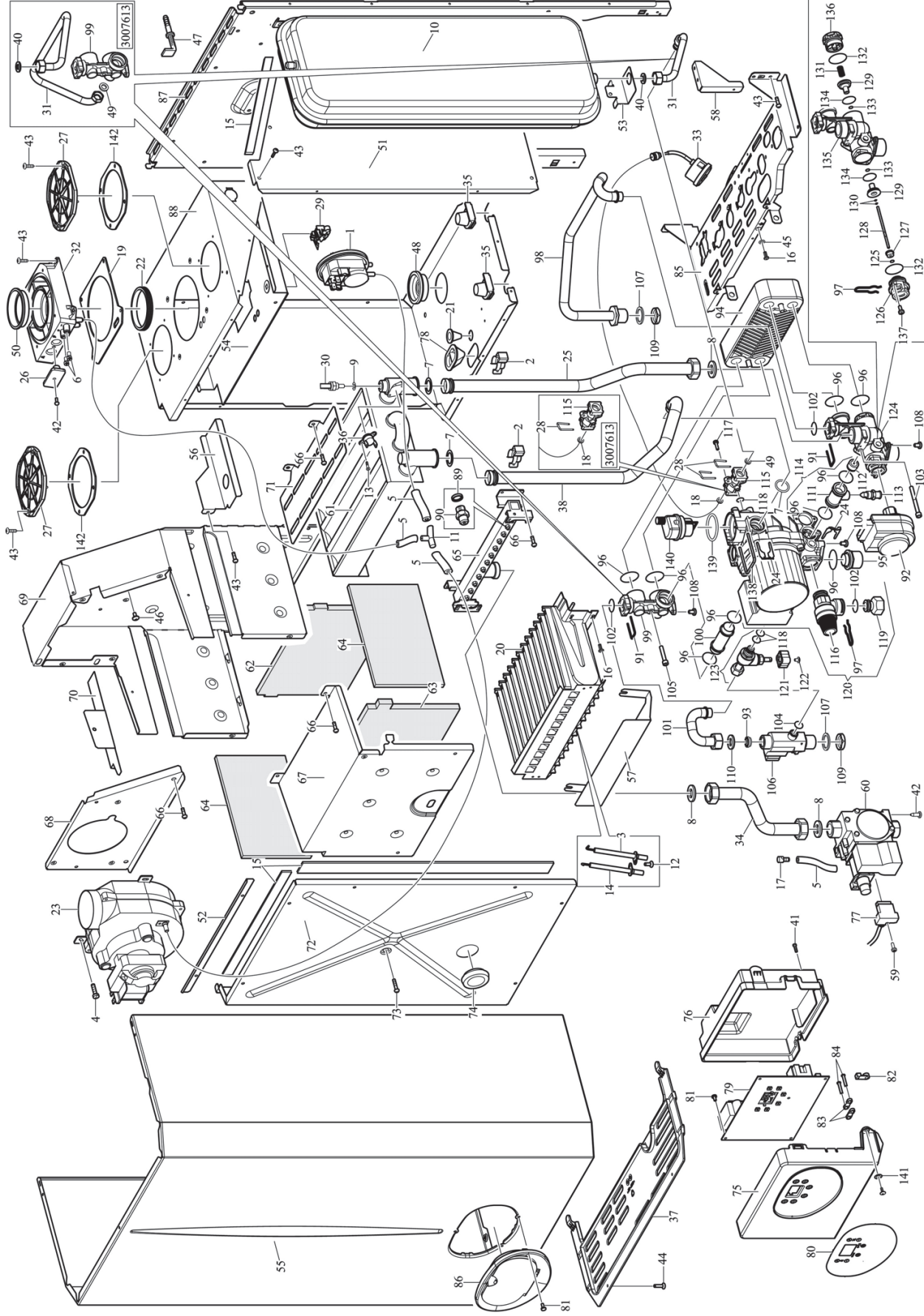


SERIAL NUMBER
START OF SERIES
2827246

09/02/06
3.016324

EOLO MINI 24 EXPORT

103AE



N.	CODE	DESCRIPTION	3007613
-	3.016125	Control panel - complete	
-	3.017083	Hydraulic assembly	
1	1.010337	Air pressure switch with fixing screws	
2	1.010371	Clip, exchanger pipes	
3	1.010645	Ignitor sensor	
4	1.0110	4.2x13 self-tapping screw, crosshead, flat point	
5	1.2363	4x8 silicone tube	
6	1.011057	Silicone messenger rest point	
7	1.011141	1.5x6x2.62 O-ring, silicone, 70 sh	
8	3.40120	Set of 3/4" seals	
9	1.012711	Seal self-sealing ring	
10	1.013450	6-litre expansion tank	
11	1.014373	5" bronze	
12	1.01152	3.9x9.5 self-tapping screw, crosshead	
13	1.015498	M3.5x4 screw, crosshead	
14	1.015597	Ignitor	
15	1.013154	Adhesive foam strip, d.15x3	
16	1.016246	M4x8 self-forming screw, crosshead	
17	1.017228	Fitting condensation tray	
18	1.017389	7.6x2.62 O-ring, epdm 70 sh	
19	1.017529	Gasket, pocket flange	
20	1.017623	Burner, 12 ramps	
21	1.020261	Grommet, silicone, d.2	
22	1.020372	Seal, twin lip, d.60	
23	1.021174	Feen	
24	1.021238	Metal-sheet clip	
25	1.021266	D.18 pipe exchanger - delivery	
26	1.021464	Plug for pocket flange	
27	1.021465	Cover, d.80 hole	
28	1.021519	Pressure switch locking clip	
29	1.021533	Plastic mount pressure switch	
30	1.021762	NTC fast immersion probe	
31	1.021850	D.10 pipe, compact block - expansion tank	
31	1.023400	D.10 pipe, compact block - expansion tank	3007613
32	1.021852	Pocket flange	
33	1.021908	Pressure gauge	
34	1.022236	D.18 pipe, gas valve - manifold	
35	1.022366	D.15.5 grommet, pipe	
36	1.022522	105°C cliscon thermostat	
37	1.023142	Bottom protective grid	
38	1.022939	D.18 pipe, pump - exchanger	
39	3.A1124	Set of 3/8" seals	
41	1.1175	3.2x13 self-tapping screw, "Rapid fix"	
42	1.2170	M4x8 screw, crosshead	
43	1.2275	4.2x9.5 self-tapping screw, crosshead, flat point	
44	1.4066	3.5x9.5 self-tapping screw	
45	1.4246	M4 lock washer	
46	1.4557	4.2x9.5 self-tapping screw, crosshead, with shoulder	
47	1.5699	Package of pair of plugs d.10x50	
48	1.6572	Grommet, silicone, d.14.5	
49	1.6958	8.7x1.78 O-ring, nitrile, 70 sh	
49	3.A1124	Set of 3/8" seals	
50	2.010352	Flue gas diaphragm, d.41,5	
50	2.012852	D.40 flume diaphragm	
51	2.011197	Side wall small, sealed chamber	
52	2.011539	L-bracket for cover	
53	2.011598	Bracket, expansion tank	
54	2.012837	Plate, air distribution	
55	2.013005	Casing framework	
56	2.012841	Rx air deflector	
57	2.012730	Bottom deflector, burner	
58	2.012833	Bracket, control panel	
59	1.013186	M3.5x16 screw	
60	1.014365	Gas valve, SJT 845 with connections	
61	1.018960	86-fin exchanger	
62	1.017601	Ceramic fibre panel, rear	
63	1.017602	Ceramic fibre panel, front	
64	1.017984	Ceramic fibre panel, side	
65	1.019431	G20 12 ramps gas manifold	
65	1.019516	LPG 12 ramps gas manifold	
66	1.7022	4.2x9.5 self-tapping screw, crosshead, tropicalized	
67	2.012659	Front wall, combustion chamber	
68	2.012660	Front cover, flue outlet	
69	2.012674	Mounting wall, combustion chamber	
70	2.012676	Lx air deflector	
71	2.012731	Deflector flue outlet	
72	3.016119	Sealed chamber cover assembly	
73	1.015046	M6x20 screw, countersunk head	
74	3.016120	Inspection hole glass assembly with seal	

75	1.021277	Bezel, control panel	
76	1.021278	Back cover, control panel	
77	1.021820	Gas valve connector	
78	1.022267	Grommet, silicone, d.3	
79	1.021866	Ignition and adjustment card	
80	1.022725	Adhesive for display	
81	1.1656	3.5x6.4 self-tapping screw, crosshead, nickel-plated	
82	1.4072	Clips clamp screw hole	
83	1.7908	Sheab cable clamp, black	
84	1.7987	3.5x19 self-tapping screw, crosshead	
85	2.012662	Valve mounting plate, assembly	
86	3.017096	Door control panel, assembly	
87	2.012640	Film wall, sealed chamber	
88	2.012673	Washer, gas nozzle	
89	0 rfs	G30 gas nozzle, d.1.30	
90	0 rfs	LPG gas nozzle, d.0.77	
91	1.023010	Clip, gas pipe	
92	1.018064	3-way valve, motor	
93	1.020246	8-litre flow limiter	
94	1.022219	12-plate exchanger	
95	1.022305	Circulating pump, coupler fitting	
96	1.022363	17.8x2.62 O-ring, epdm peroxide	
97	1.022519	Motor locking foot	
98	1.022662	D.14 pipe, hot outlet	
99	1.022934	Cold inlet manifold	
99	1.023397	Cold inlet manifold	
100	1.022935	Connection pipe, circulating pump - hot outlet	
101	1.022937	D.12 pipe, flowmeter - cold inlet manifold	3007613
102	1.023008	13.95x2.62 O-ring, epdm peroxide	
103	1.023009	M5x55 hex socket screw	
104	1.024015	5.5x2.00 O-ring, epdm peroxide	
105	1.023012	M5x28 hex socket screw	
106	1.023015	Flowmeter	
107	1.0278	Seal, 28x21x2 in flexoid	
108	1.1176	M5x8 screw, crosshead	
109	1.1269	1-2" F shallow brass nut	
110	3.A1363	Set of 1/2" seals	
111	1.022936	By-pass fitting	
112	1.023005	Valve	
113	1.4275	Drain outlet with hose union	
114	3.016693	By-pass assembly	
115	1.023004	Pressure switch flange	
115	1.023512	Pressure switch flange	
116	1.022306	Safety valve, 3 bar	
117	1.022320	3.5x12 self-tapping screw, crosshead, flat point	
118	1.022360	6.75x1.78 O-ring, epdm peroxide	
119	1.023703	Drain outlet	
120	3.017082	Pump assembly	
120	3.017104	Pump assembly	
121	1.022728	Filler knob	
122	1.4419	M4x6 screw for filler knob	
123	3.016700	Filler valve assembly	
124	3.016701	3-way valve assembly	
125	1.013235	2.84x2.62 O-ring, epdm peroxide	
126	1.022271	3-way valve motor, flange	
127	1.022272	Flange bush	
128	1.022335	Stern	
129	1.022336	Poppet, 3-way valve	
130	1.022337	1.9 snap ring	
131	1.022347	Spring	
132	1.022357	21.89x2.62 O-ring, epdm peroxide	
133	1.022358	2.9x1.78 O-ring, epdm peroxide	
134	1.022359	13.10x2.62 O-ring, epdm peroxide	
135	1.022931	Housing, 3-way valve	
136	1.022932	Plate exchanger, flange	
137	1.7349	M4x10 screw, crosshead	
138	1.022302	Breather valve clip	
139	1.019249	34.00x3.00 O-ring, epdm 70 sh	
140	1.022102	Breather valve	
141	1.8599	4.3x12 washer	
142	1.010334	Seal, d.80 hole	